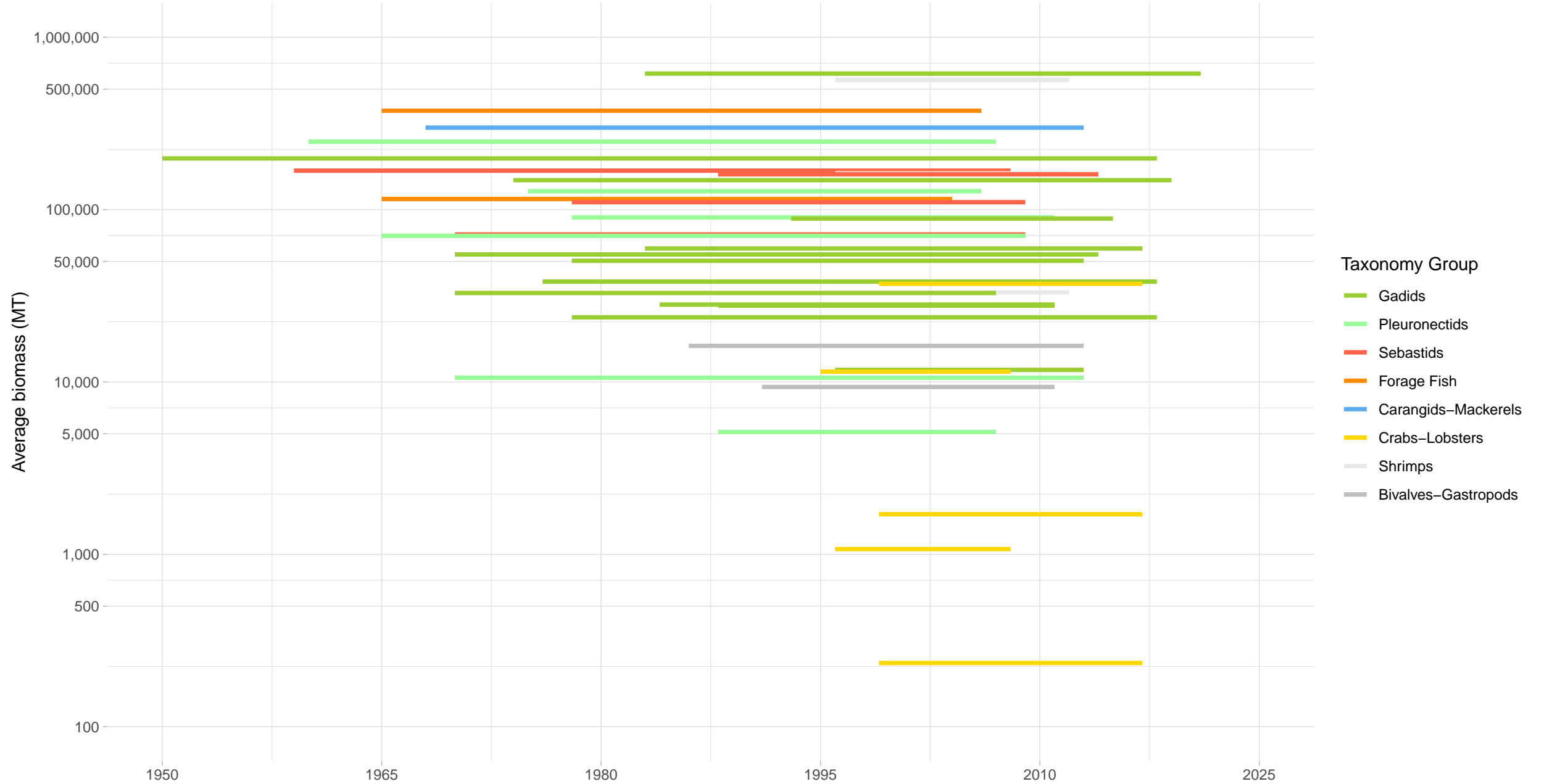
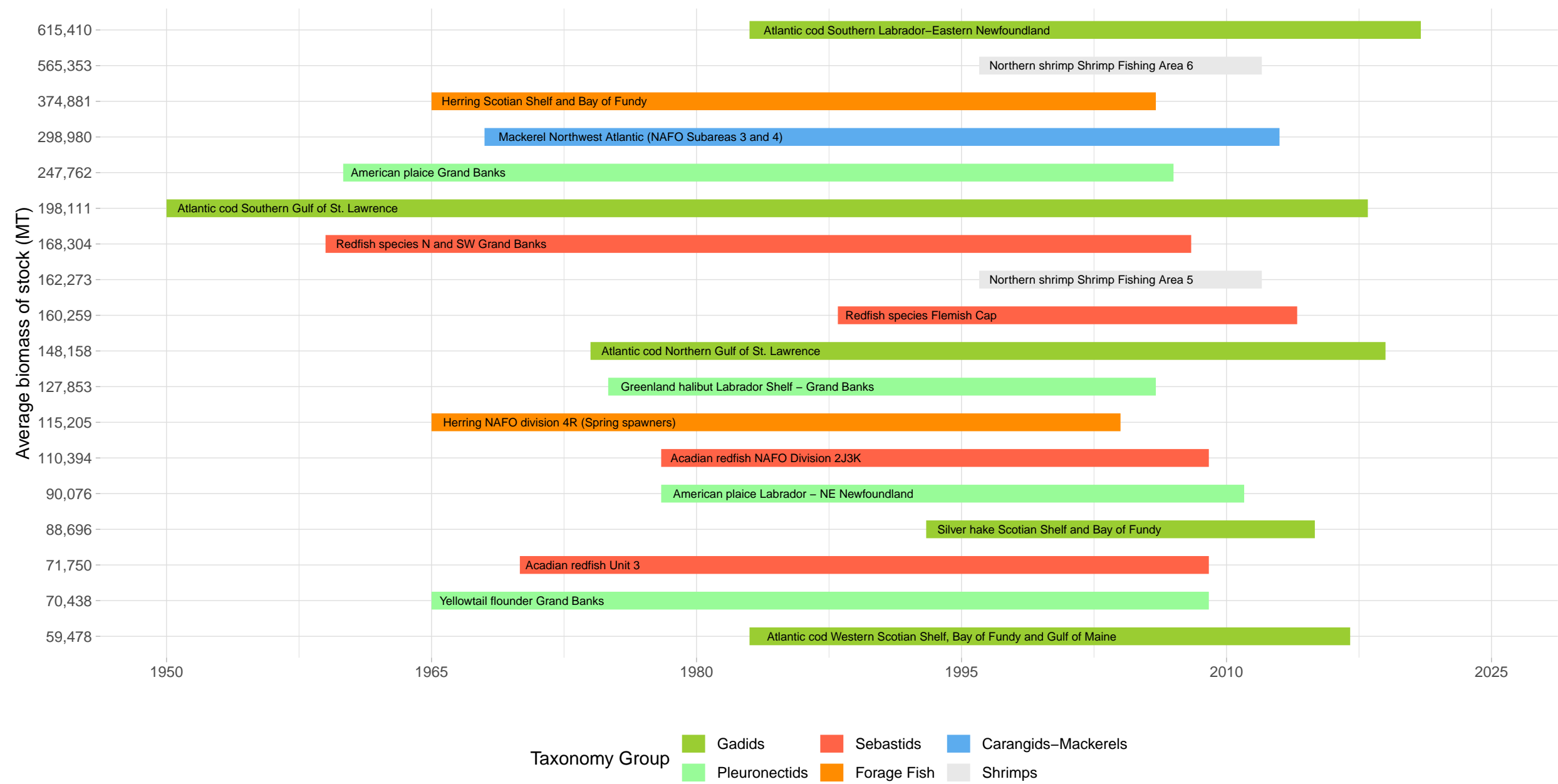


Biomass Coverage in Canada East Coast Region



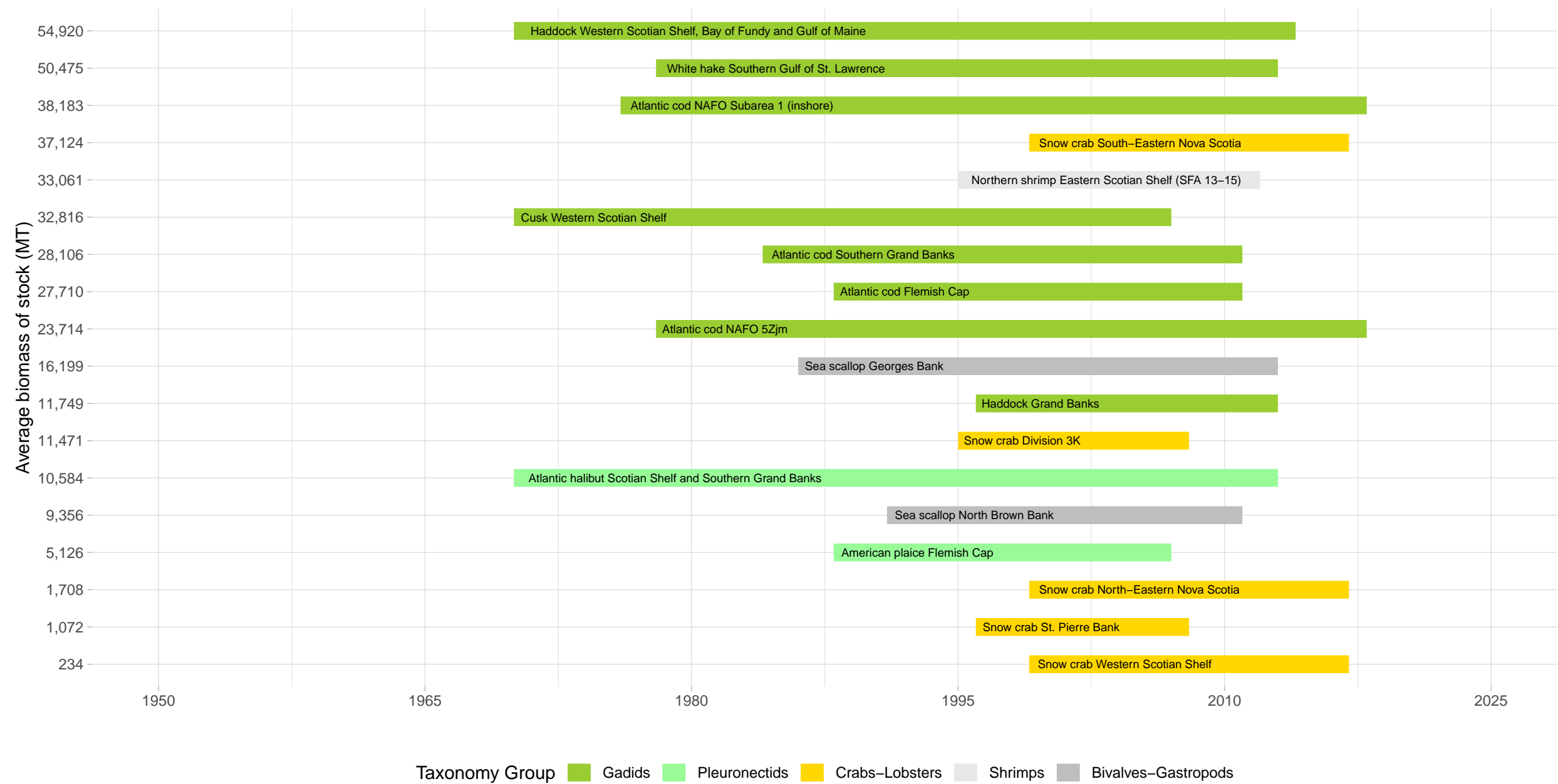
Biomass Coverage Over Time in Canada East Coast Region

Stocks with highest average biomass



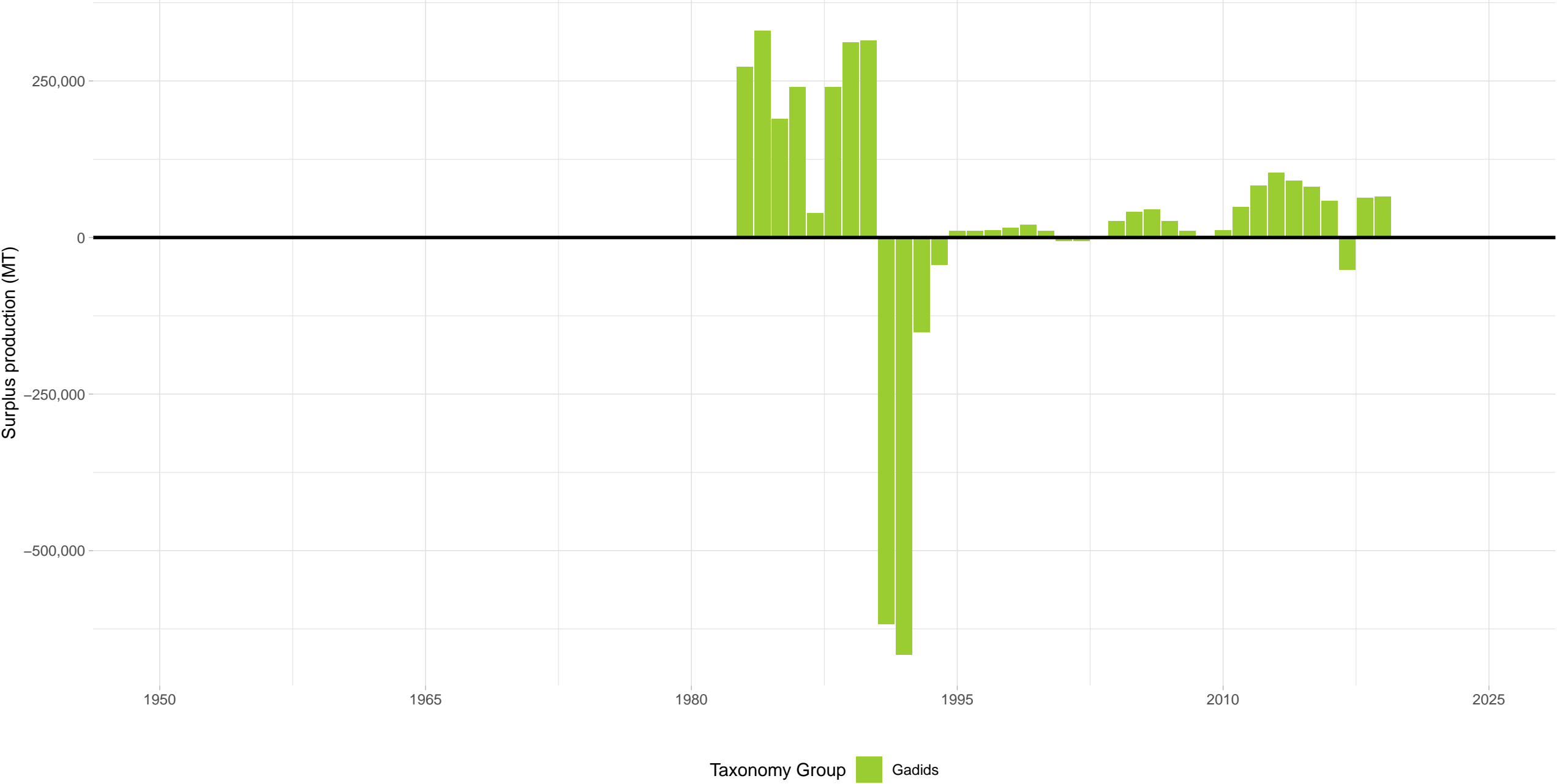
Biomass Coverage Over Time in Canada East Coast Region

Stocks with lowest average biomass



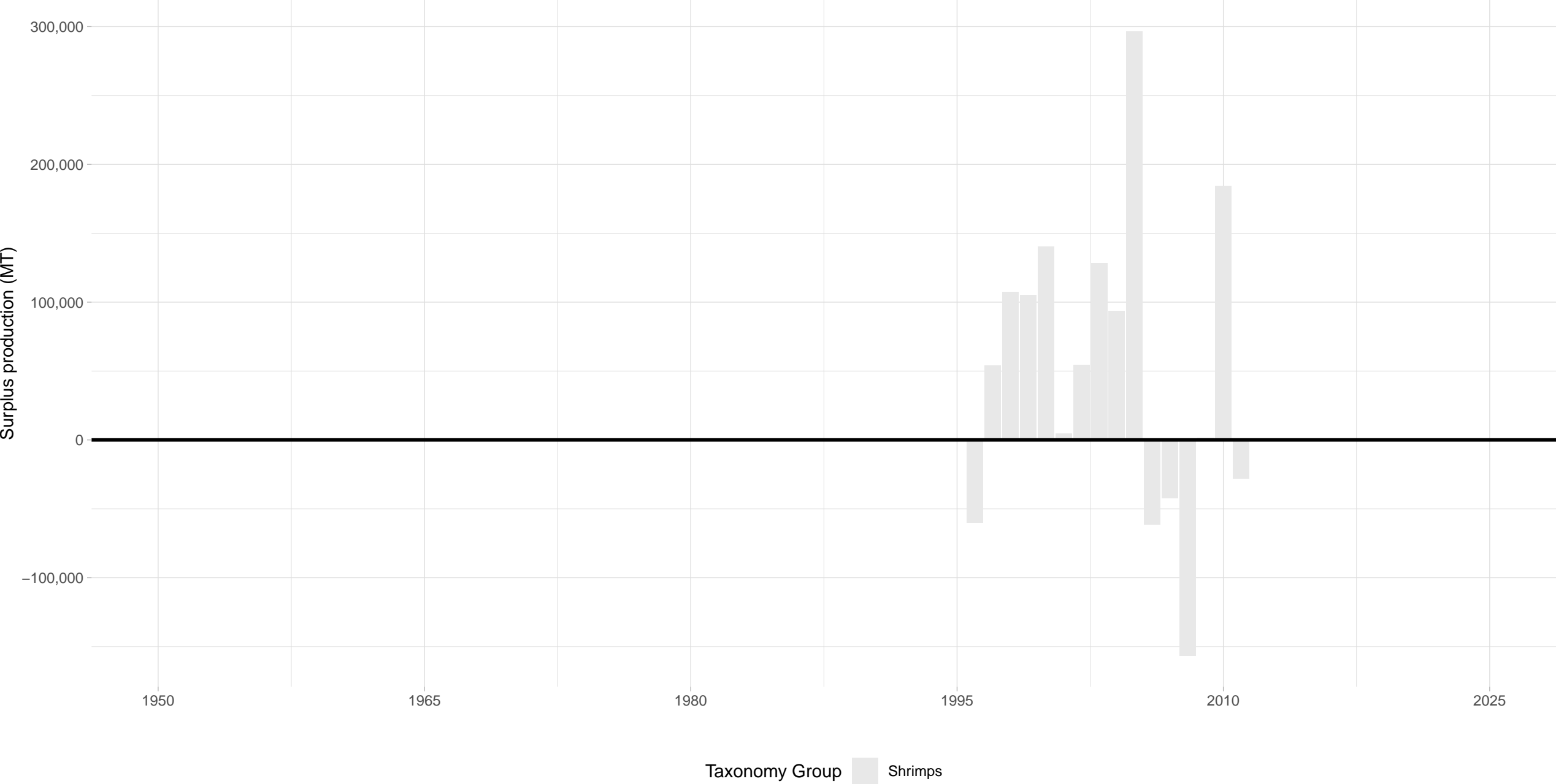
Atlantic cod Southern Labrador–Eastern Newfoundland – Canada East Coast Region

Stock represents 13% of average absolute surplus production



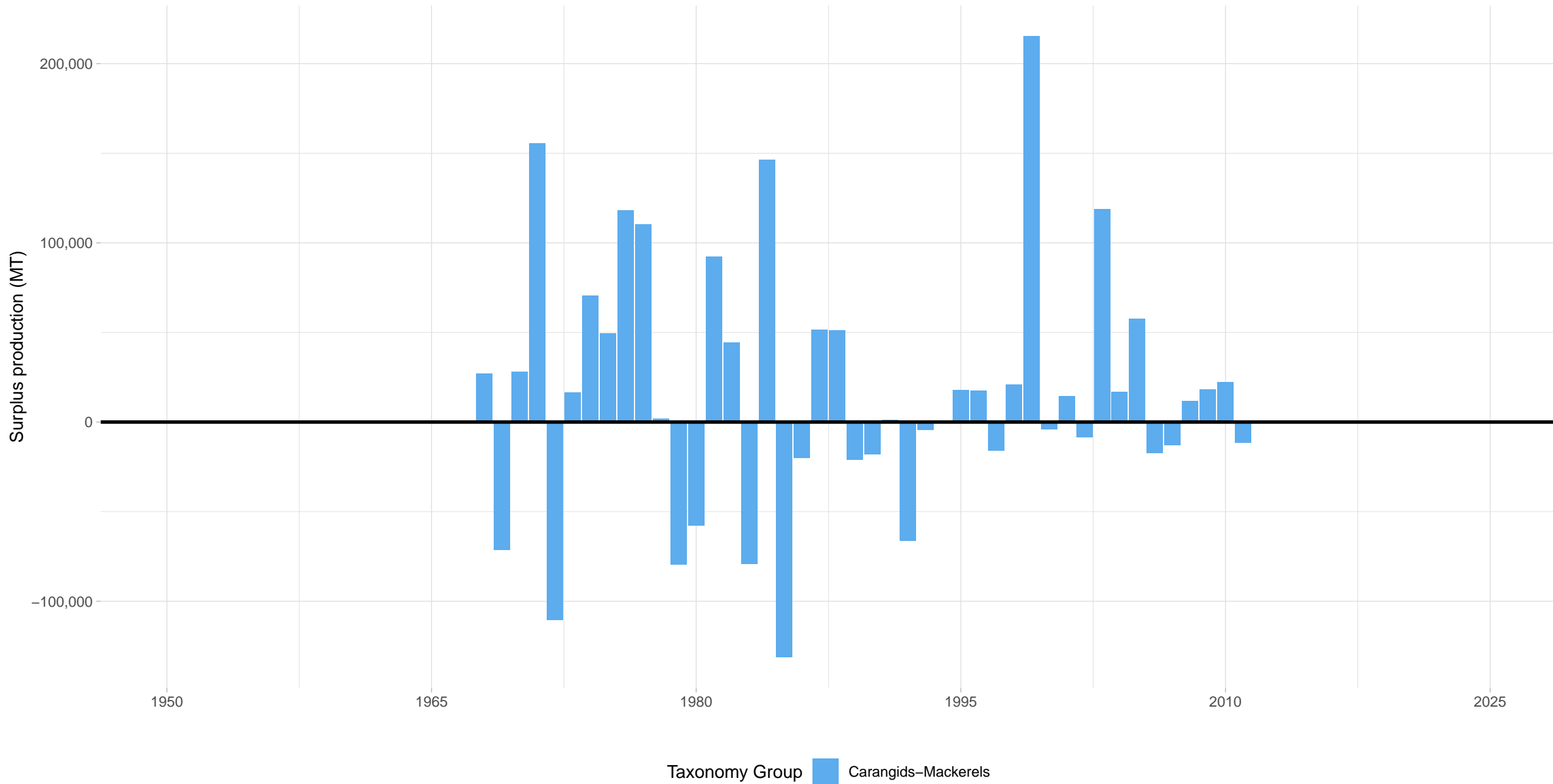
Northern shrimp Shrimp Fishing Area 6 – Canada East Coast Region

Stock represents 11% of average absolute surplus production



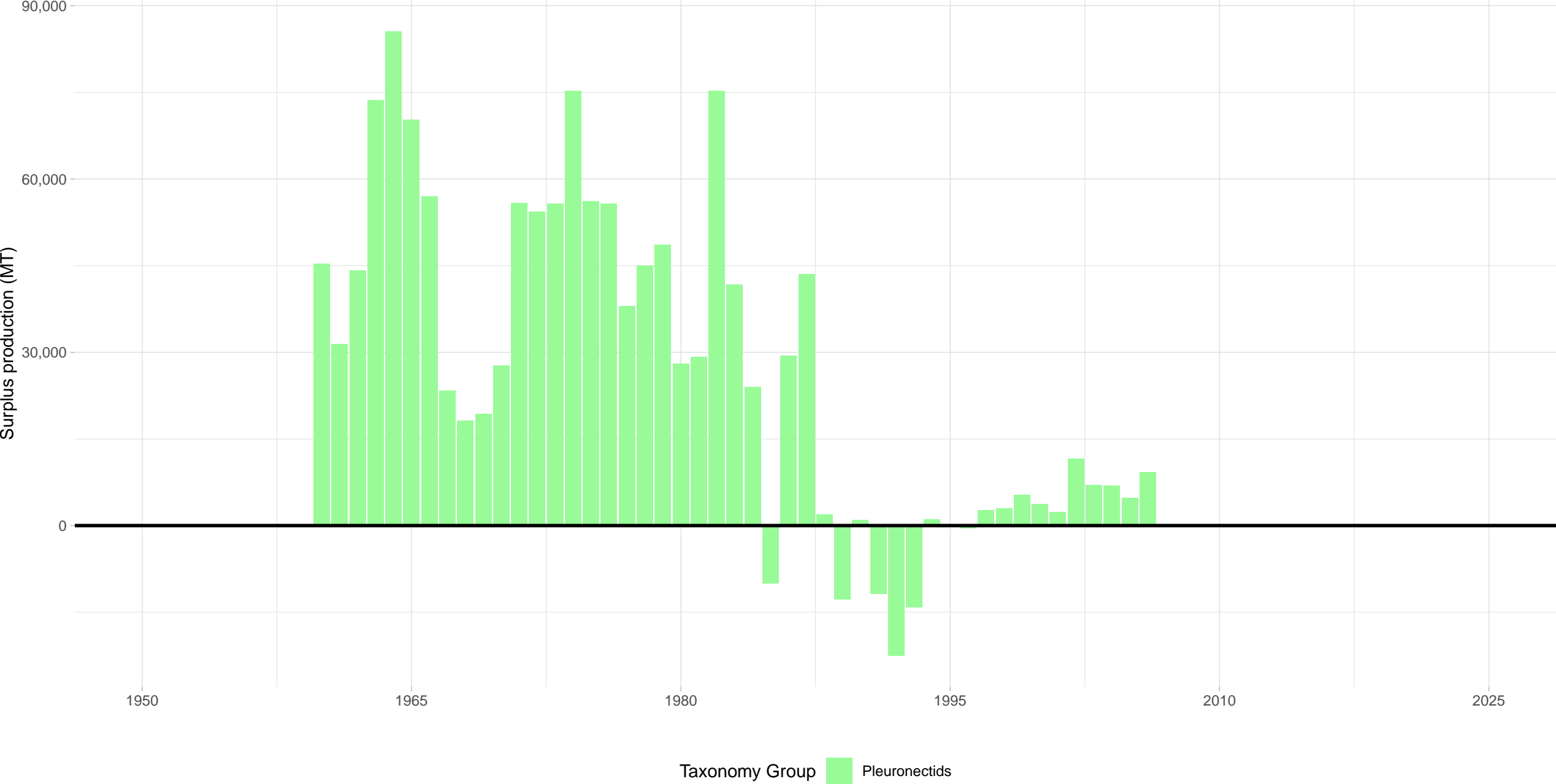
Mackerel Northwest Atlantic (NAFO Subareas 3 and 4) – Canada East Coast Region

Stock represents 6% of average absolute surplus production

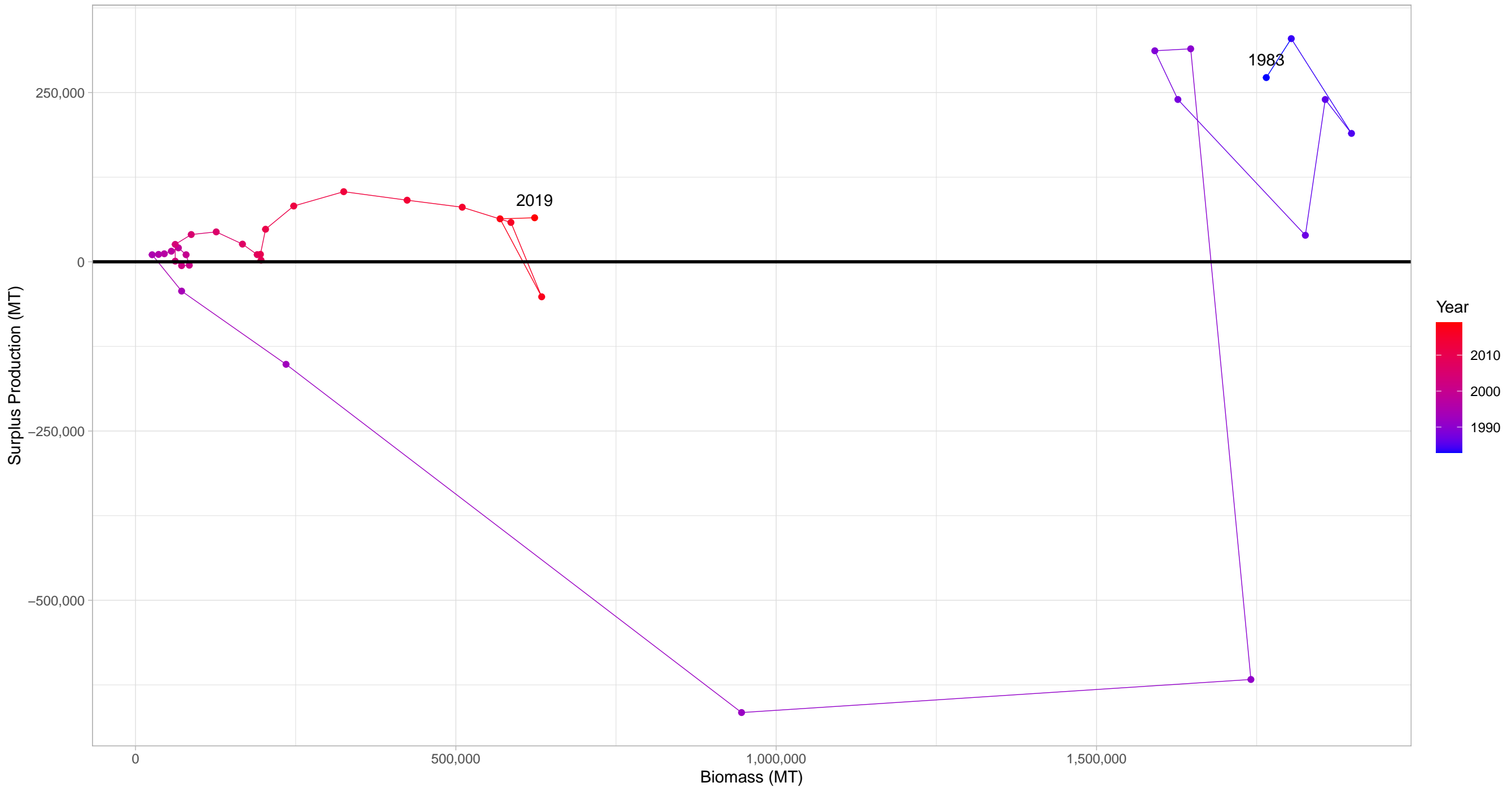


American plaice Grand Banks – Canada East Coast Region

Stock represents 3% of average absolute surplus production

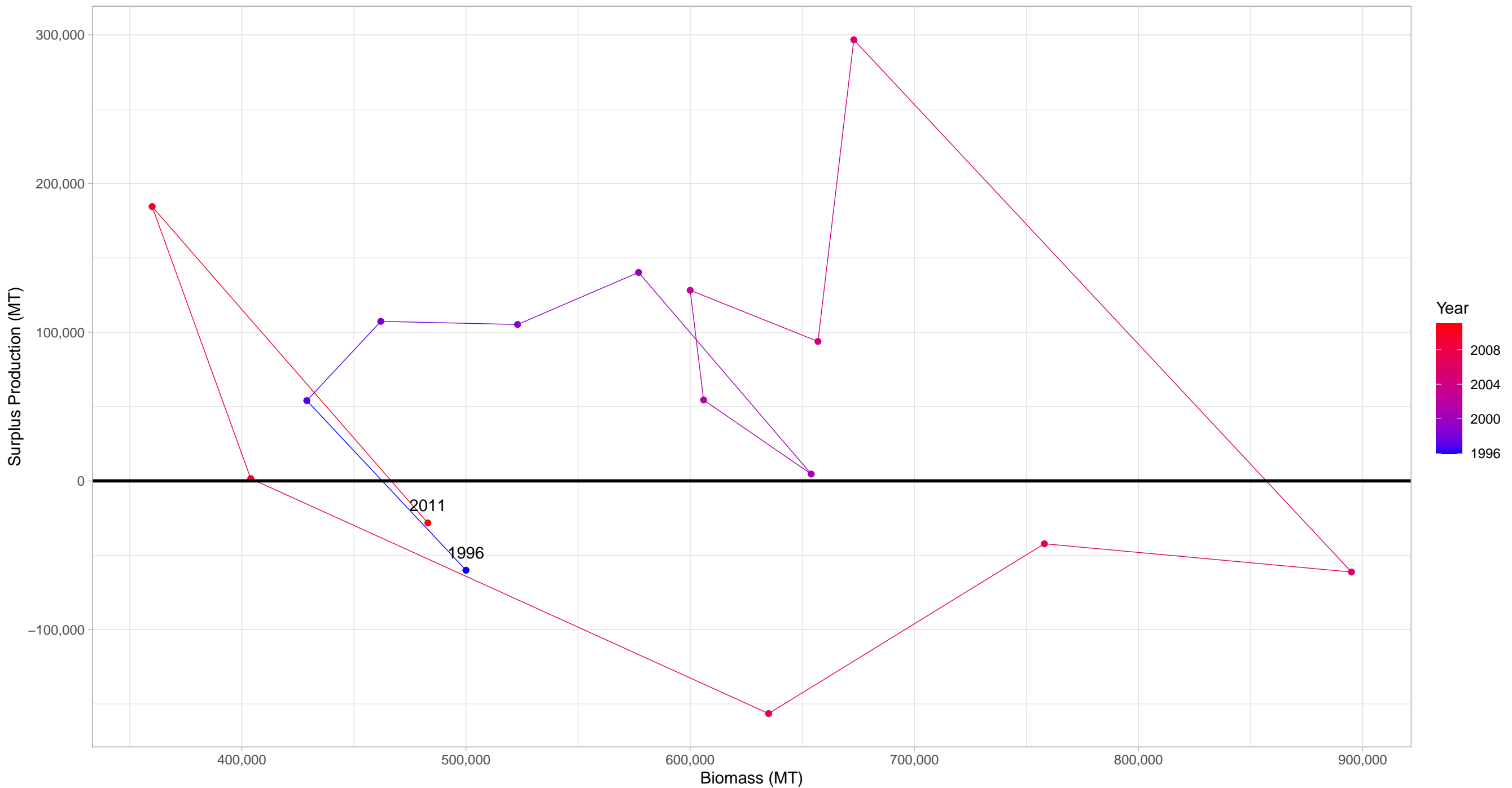


Atlantic cod Southern Labrador–Eastern Newfoundland in Canada East Coast Region



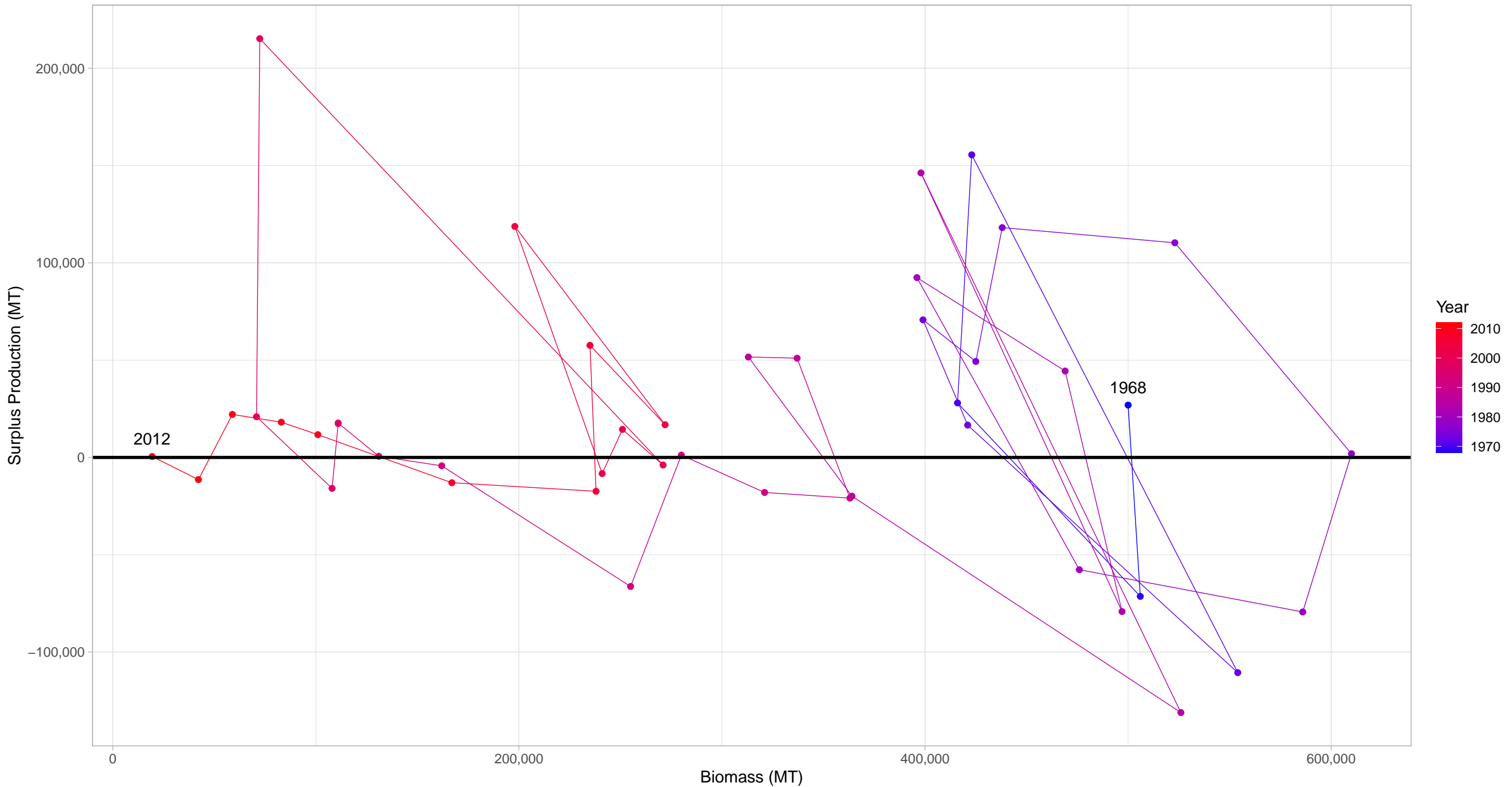
First and last years with recorded surplus production are labeled

Northern shrimp Shrimp Fishing Area 6 in Canada East Coast Region



First and last years with recorded surplus production are labeled

Mackerel Northwest Atlantic (NAFO Subareas 3 and 4) in Canada East Coast Region



American plaice Grand Banks in Canada East Coast Region

